



PAL Orientation with District authorities

Agenda for PAL Orientation

1	Objective & Importance of PAL
2	Overview of PAL implementation in AP
3	Overview of PAL product - ConveGenius
4	Key stakeholders and their Roles & Responsibilities
5	School selection
6	School Readiness
7	Indicative timelines and Action Items

1	Objective & Importance of PAL
2	Overview of PAL implementation in AP
3	Overview of PAL product - ConveGenius
4	Key stakeholders and their Roles & Responsibilities
5	School selection
6	School Readiness
7	Indicative timelines and Action Items

Personalized Adaptive Learning (PAL)

Improves Learning outcomes of the child

Remediation of concepts
taught in class

Continuous assessment of
the child

Blended learning
(PAL + Teachers)

Unique learning trajectory
for each child

Identification of learning
gaps of each child and class

Empowers teachers with
actionable intelligence

Transforms the teaching & learning experience for teachers and students in Govt. schools in AP

1	Objective & Importance of PAL
2	Overview of PAL implementation in AP
3	Overview of PAL product - ConveGenius
4	Key stakeholders and their Roles & Responsibilities
5	School selection
6	School Readiness
7	Indicative timelines and Action Items

PAL implementation in Andhra Pradesh

Proof of Concept

Conducted in 60 schools in Feb 2019 by empaneling 3 PAL solution providers–
ConveGenius, Funtoot, Mindspark



Phase -1

Will be implemented in 900 schools in Oct-Dec 2019– 300 schools with each PAL
solution

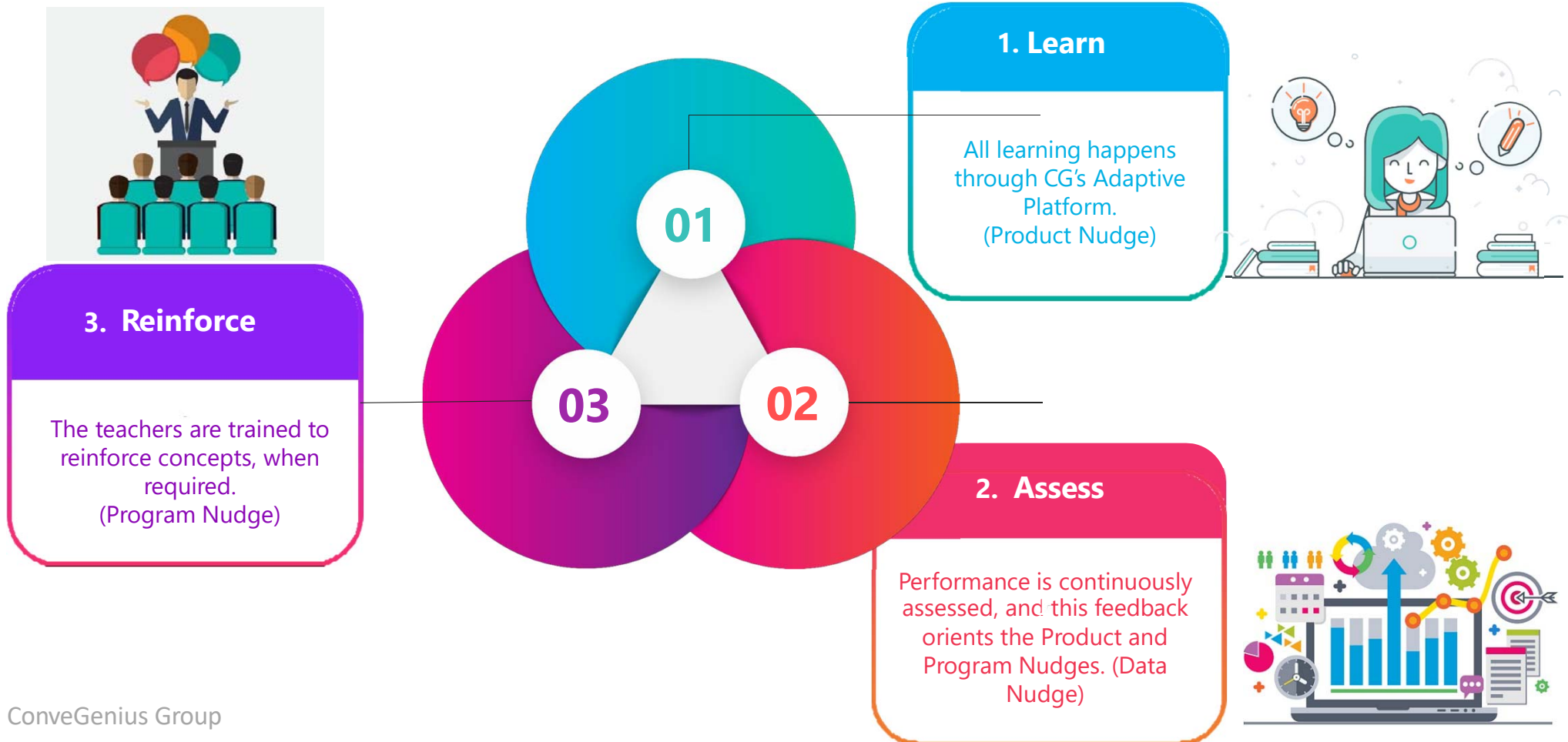


Scale Up

Will be implemented in AY 2020-21 in ~2000 schools across all districts

1	Objective & Importance of PAL
2	Overview of PAL implementation in AP
3	Overview of PAL product - ConveGenius
4	Key stakeholders and their Roles & Responsibilities
5	School selection
6	School Readiness
7	Indicative timelines and Action Items

How does PAL lab work?





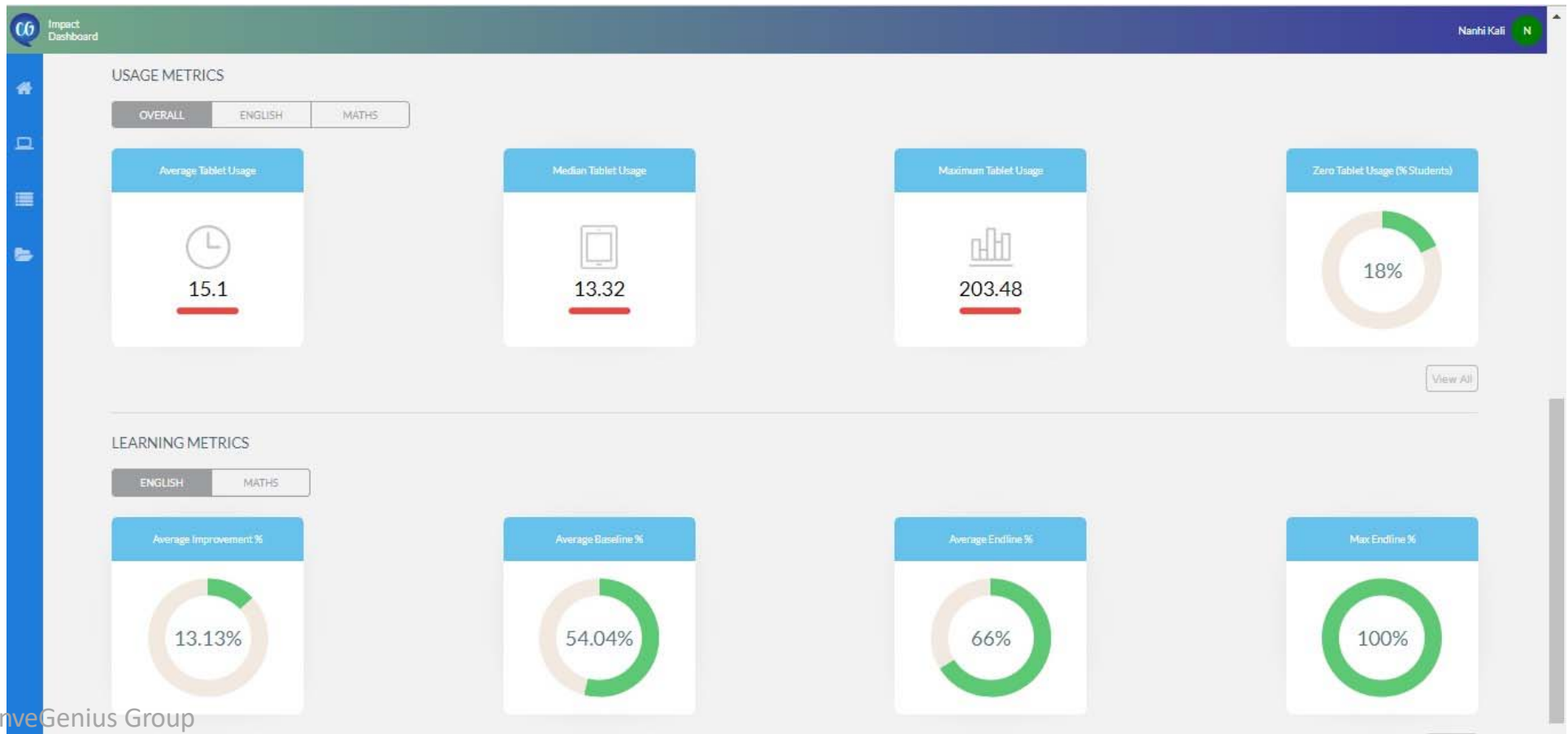


State curriculum mapped learning content

The screenshot shows a 'MATHS' app interface with three chapter cards. The top bar is yellow with a home icon and a pencil icon. The background is light blue with math-related icons like a ruler, pencil, and 'ABC'. Chapter 2 is grey and locked, Chapter 3 is grey and locked, and Chapter 4 is blue and not started. A cartoon bear character is visible in the bottom left corner.

Chapter	Topic	Status
Chapter 2	Addition (single digit numbers)	Locked
Chapter 3	Subtraction (single digit numbers)	Locked
Chapter 4	Numbers (from 10 to 20)	Not Started

Impact Dashboards to enhance decision-making abilities of all stakeholders



Preparing teachers for a student-centric approach

Role of PAL platform

- Delivering instruction directly to students
- Diagnosing student learning needs
- Varying the delivery method of instruction
- Tailoring the learning experience to meet individual student needs
- Supporting peer-to-peer learning and providing interactive experiences



Role of Teachers

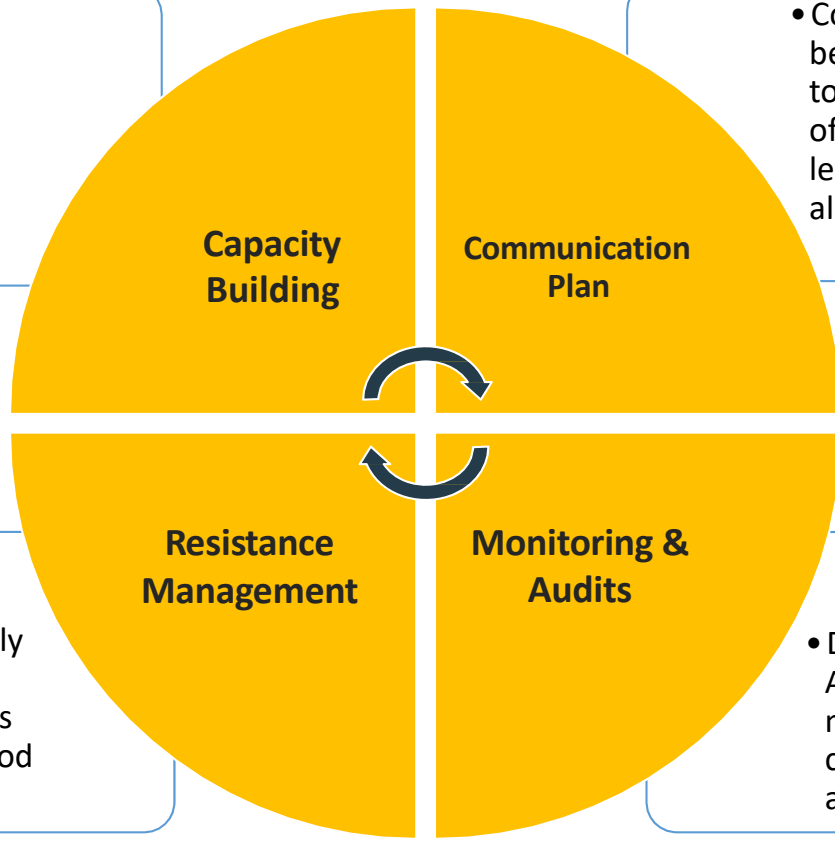
- Make children the centre of learning, teacher's job is not to talk but to facilitate an environment for learning
- Encourage the child with appreciation (get more stars in the learning games etc.)
- Observe the children, to prepare the best prepared environment for doubt solving
- Looking at child's competency/ chapter scores & fostering independent practice of specific skills through student collaboration

Training & Change management



- Intensive training for teachers, supervisors and admins for efficient implementation

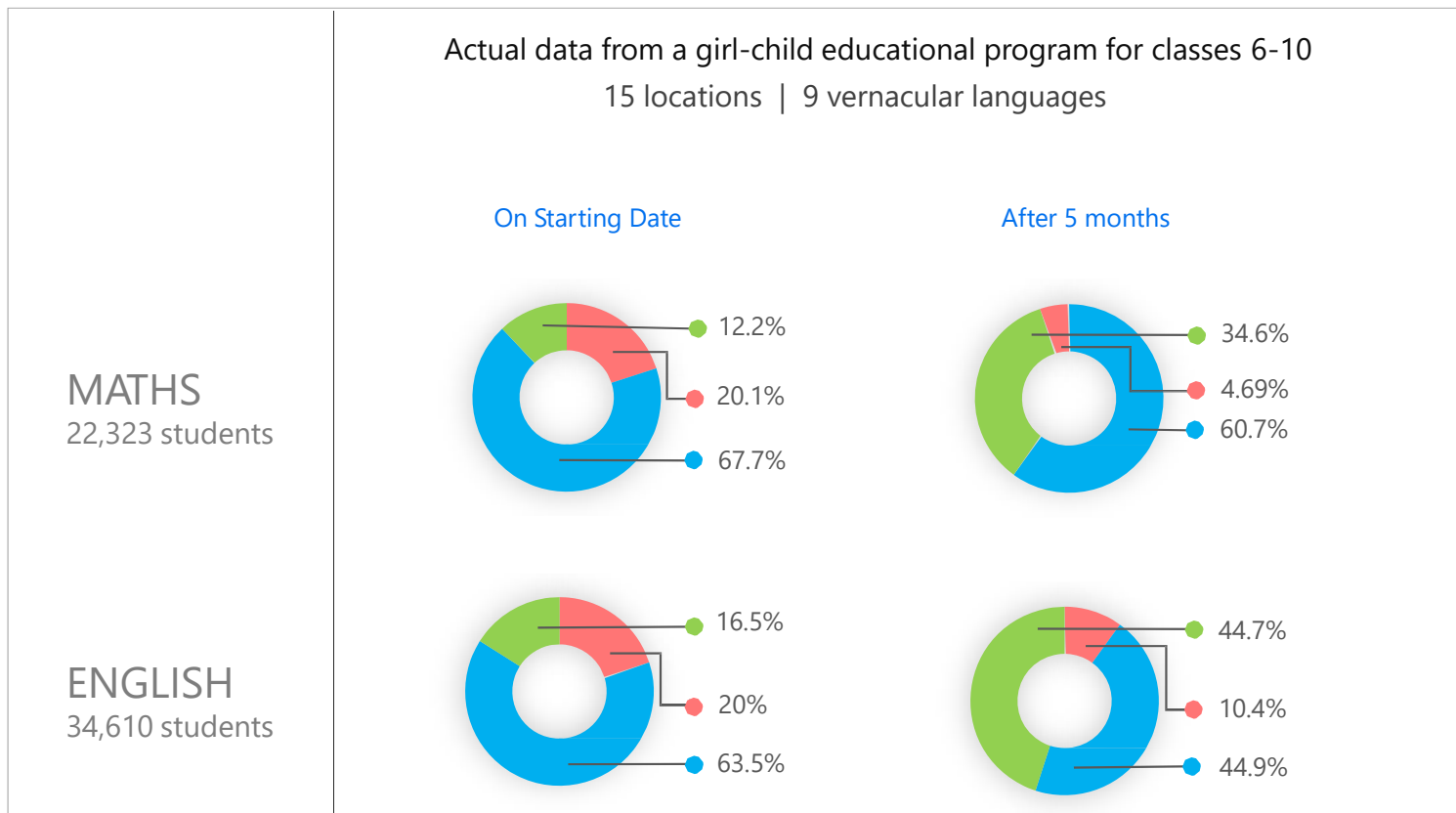
- Communication of best practices towards fulfillment of common learning/operational goals



- Easy-to-manage daily operations and recognizing teachers and students for good performance

- Data syncing & Auditing mechanisms to correct anomalies

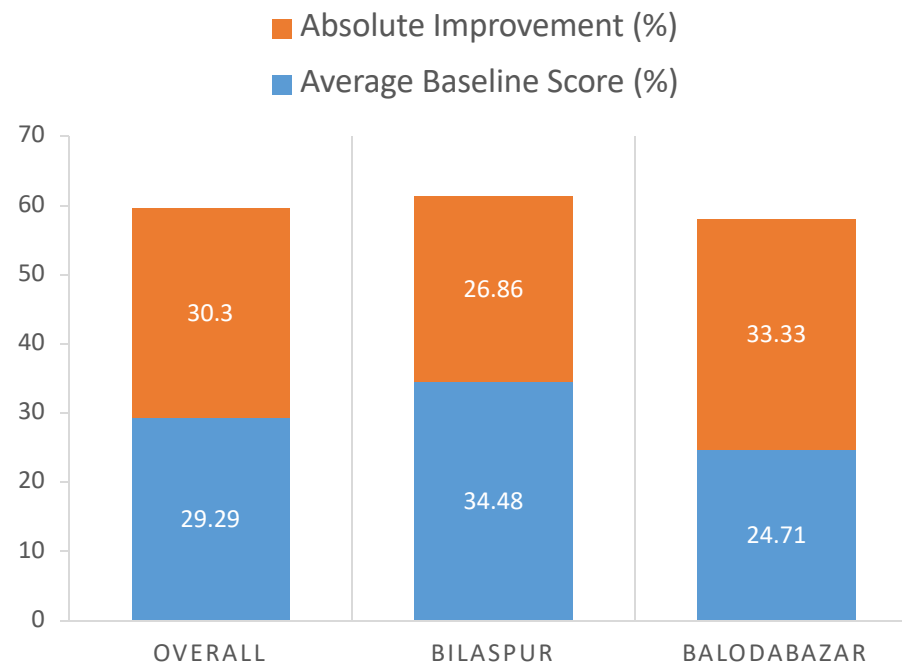
Change in learning levels





Learning gains between baseline & endline assessments

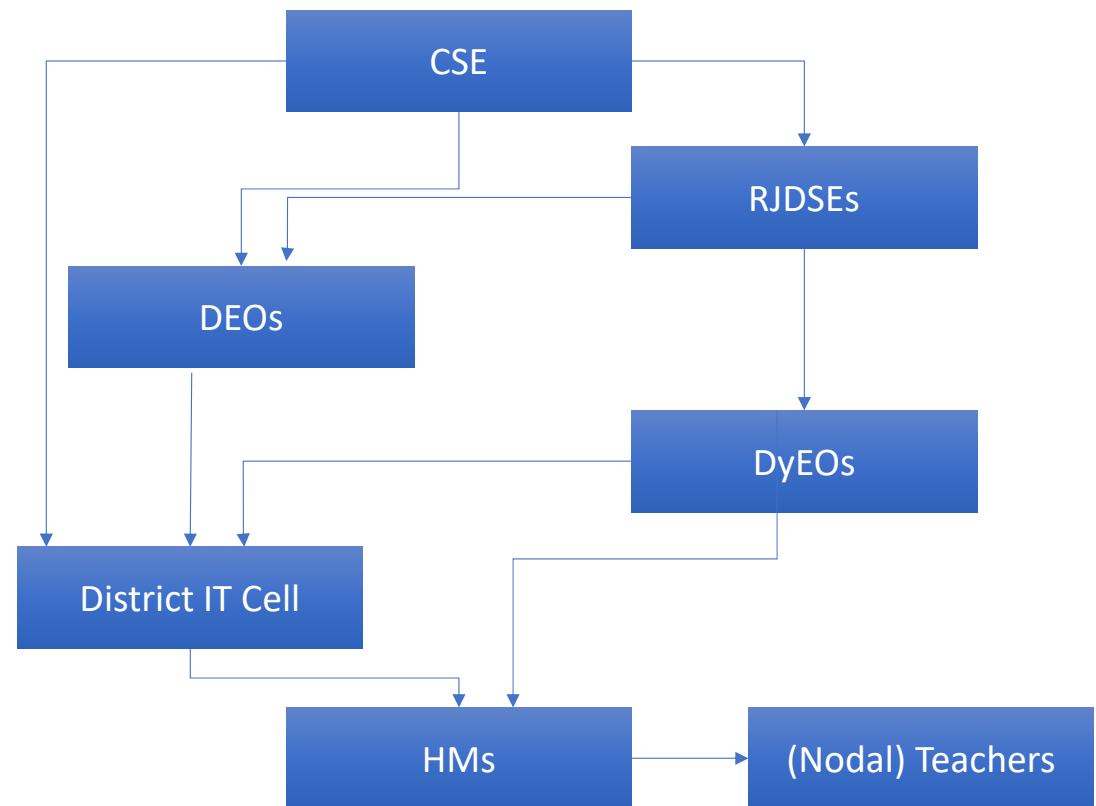
MATHS



1	Objective & Importance of PAL
2	Overview of PAL implementation in AP
3	Overview of PAL product - ConveGenius
4	Key stakeholders and their Roles & Responsibilities
5	School selection
6	School Readiness
7	Indicative timelines and Action Items

Key Stakeholders for successful implementation of PAL

1. Commissionerate of School Education (CSE)
2. Regional Joint Director of School Education (RJDSE)
3. District Education Officers (DEOs)
4. Deputy Education Officers (DyEOs)
5. District IT cell coordinators
6. Head Masters (HM)
7. (Nodal) Teachers



Roles & Responsibilities - RJDSEs

- Co-ordinate with DEOs for all activities related to PAL in their respective districts, support DEOs in resolving matters, and escalating matters if required
- Monitor the deployment in the allocated schools
- Review progress of PAL deployment until PAL is live in all the allocated schools and coordinate with respective DEOs to address challenges for go-live
- Conduct field visits (preferably once a month) to highlight the importance and investment of the senior leadership on PAL

Roles & Responsibilities - DEOs

- Co-ordinate all activities related to PAL in their respective districts
- Allocate responsibilities and issue all necessary instructions to different stakeholders in the district for PAL implementation
- Provide adequate administrative support to ensure the PAL is being implemented in all the selected schools, highlight any challenges for appropriate action/resolution.
- Take measures for secure storage of the hardware received at the district level and during software installation until delivered to schools
- Conduct 1-day orientation workshops with HMs on PAL and emphasize their roles and responsibilities in PAL implementation
- Support DyEOs & District IT cell in actively resolving grievances/challenges related to PAL deployment/go-live in selected schools
- Review progress of PAL deployment (with DyEOs & IT cell) until PAL is live in all the allocated schools.
- Conduct field visits (preferably once a week) to highlight the importance and investment on PAL
- Visit the teacher trainings, preferably on first day of every training to introduce the PAL programme, emphasize its importance and encourage teachers to adopt it

Roles & Responsibilities - DyEOs

- Co-ordinate all activities related to PAL in their respective districts and support DEOs in the implementation
- Participate in orientation workshop to be conducted by CSE to understand about PAL and their roles and responsibilities in PAL implementation
- Support DEO in organizing a 1-day orientation program for the HMs to communicate about PAL and their responsibilities in deployment
- Coordinate with HMs and ensure that the PAL lab is ready and functional before the hardware is deployed in schools (all physical infrastructure, repairs and other equipment as indicated by the CSE)
- Support district IT cell and PAL vendors in organizing the 2-day induction training program for select teachers
- Visit the teacher trainings (preferably on first day of every training) to introduce the PAL programme, emphasize its importance and encourage teachers to adopt it
- Monitor the status of school readiness and deployment in the selected schools, preferably conduct inspection of the schools to monitor school readiness and deployment

Roles & Responsibilities – Dist. IT cell

- Support DEOs & DyEOs in all day-to-day activities related to PAL in their respective districts
- The district teams are required to **support in hardware deployment**
 - Receive the hardware/equipment and bill of materials (and complete related documentation)
 - Store the hardware securely until delivered to schools
 - Coordinate with PAL vendors on the quality check of the hardware received
 - Support PAL vendors in software installation and appropriate tagging of the hardware to respective schools before dispatch
 - Support hardware vendor in dispatching the hardware to respective schools
 - Work with FMS and ensure PAL lab is set up in all the selected schools
- Support required in **PAL workshops & trainings**
 - Coordinate with DEOs, DyEOs & HMs and organize the 1 - day orientation workshop to be led by CSE to communicate and discuss about PAL and their roles and responsibilities in the implementation
 - Coordinate with CSE and PAL vendors in arranging for 2-day training program for 2 mathematics teachers from each of the selected schools (try to bring DEOs to address the teachers at the start of the training program)
- Provide guidance to HMs in selected schools to ensure that the PAL lab is ready and functional before the hardware is deployed in schools (*all physical infrastructure, repairs and other equipment as indicated by the CSE*)

1	Objective & Importance of PAL
2	Overview of PAL implementation in AP
3	Overview of PAL product - ConveGenius
4	Key stakeholders and their Roles & Responsibilities
5	School selection
6	School Readiness
7	Indicative timelines and Action Items

Criteria for School selection

Criteria for District Selection

1. District academic performance (preferably 2 from each rank)
2. No. of schools to get PAL in scale up across 2 two phases (different categories for each rank on academic performance with at least one district from each category)

District	Rank of Academic Performance	Rank of # of schools in the district to get PAL
Prakasam	Top	Mid
Kadapa	Top	Bottom
West Godavari	Mid	Top
Kurnool	Mid	Mid
Vizianagaram	Bottom	Mid
Chittoor	Bottom	Top

Criteria for number of schools allocated to the districts

1. Proportionate to the no, of eligible schools
2. Operational challenges for FMS

Criteria for Division selection

For each district,

1. Randomly choose a Division (*#also consider operational challenges*)
2. Select all or proportion of eligible* schools in the Division
3. Randomly choose another Division
... And so on till we reach the sum of schools to be filled in the district

* Eligible -> If rooms other than class rooms are available or space available for setting up new room as per the data in MIS

Operational challenges refers to deployment of FMS in 1:6 ratio in nearby localities

Tablet schools' allocation across districts

ZONE 1		
District	Educational Division	No. of tablet schools selected
VIZIANAGARAM	Bobbili	8
	Vizianagaram	18
Total		26

ZONE 2		
District	Educational Division	No. of tablet schools selected
WEST GODAVARI	Eluru	14
	Koyalagudem	26
	Tanuku	25
Total		65

ZONE 3		
District	Educational Division	No. of tablet schools selected
PRAKASAM	Kandukur	8
	Ongole	25
	Parchur	21
Total		54

ZONE 4		
District	Educational Division	No. of tablet schools selected
CHITTOOR (128)	Chittoor	39
	Madanapalli	32
	Puttur	27
	Tirupati	30
KADAPA (15)	Kadapa	5
	Proddatur	3
	Rayachoty	7
KURNOOL (12)	Dhone	7
	Nandyal	5
Total		155

1	Objective & Importance of PAL
2	Overview of PAL implementation in AP
3	Overview of PAL product - ConveGenius
4	Key stakeholders and their Roles & Responsibilities
5	School selection
6	School Readiness
7	Indicative timelines and Action Items

Requirements for each school

1

School Readiness

(before hardware deployment)

- A room (25 ft * 25 ft) which can be converted into PAL lab (DCR/VCR room can also be used for the purpose)
- Room readiness
 - A door with a functional lock (secure to keep tablets/laptops)
 - Windows with grills, bolts and no broken glasses
 - Repairs done to prevent rooftop (ceiling) leakage, if any
 - Repairs to fix floor levelling, broken tiles, if any
 - Electrical works – fans, lights, 30 plug points positioned along the walls, electrical earthing
- Furniture readiness
 - Cupboards with functional lock (to secure tablets/laptops, headphones, stands and other equipment provided)
 - Desks and stools or benches for students
 - Desk and chair for teacher
- Internet – Broadband/ mobile internet connection

2

PAL lab set up

- Arrangement of furniture as per the specifications provided by PAL solution provider
- Teacher trainings on PAL before inauguration
- Set-up of devices in the lab
- Creation of student profiles
- Preparation of time-table for PAL sessions
- Appropriate labels and information pasted at the entrance, walls of PAL lab

School Readiness



1	Objective & Importance of PAL
2	Overview of PAL implementation in AP
3	Overview of PAL product - ConveGenius
4	Key stakeholders and their Roles & Responsibilities
5	School selection
6	School Readiness
7	Indicative timelines and Action Items

Action Items (next 30 days)

1	Send out necessary notifications for PAL implementation
2	Conduct HM Orientation for the selected schools
3	Support HMs in school readiness
4	Support PAL vendors in software installation
5	Support PAL vendors in organizing teacher trainings
6	Ensure PAL Lab is set up in each of the selected schools in your district

Questions?

THANK YOU

